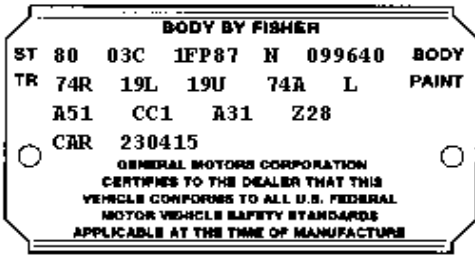


Single Stage Paint



If there is an “L” on the paint code and it is an original paint job on the car there is a good chance it is Lacquer.

That is a single stage paint and usually will show signs of fine cracks in the surface almost like washing scratches.

Try a little bit of Correcting Compound on a Microfiber cloth in a hidden area on the car and see if when you gently rub the paint you get any colour on the cloth.

If you do it is single stage paint.

As it is single stage a very light touch is good and you will see colour built up on the pad as you work the surface.

Do you have any Revive Polish as that works well on single stage?

If not start with the finishing polish and see what the result is and then wax or Ceramic Boost.

If you can let me know what colour you are dealing with as well.

Glen Yates